

VAPIR® OXYGEN MINI

A stylized, high-contrast illustration of a person's head and neck in profile, facing left. They are using a VAPIR Oxygen Mini device. The device is shown as a black silhouette with a white outline, featuring a mouthpiece and a nasal cannula. The person's mouth is open, and the device is positioned to deliver oxygen. The background consists of a series of vertical, slightly curved lines that create a sunburst or radiating effect, transitioning from light gray at the top to black at the bottom.

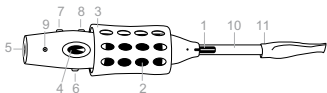
USER'S GUIDE 2.0

A black silhouette of a city skyline, featuring various buildings of different heights and shapes, including a prominent tower with a pointed top. The skyline is positioned at the bottom of the page, below the title and above the VAPIR logo.

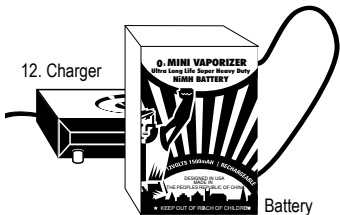

VAPIR®

★ IDENTIFYING THE PARTS ★

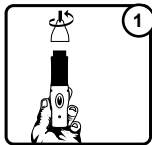
1. Mouthpiece. Enjoy flavor of vapor.
2. Heating chamber.
Caution: *This area gets hot.*
3. Protective heat shield. Always use the protective heat shield to prevent injury.
4. LCD Display. Display toggles between set temperature and actual temperature.
5. Power input.
6. Heat. Activate heating.
7. Temperature +.
8. Temperature –.
9. LED Light. Red indicates unit is heating up. Green indicates set temperature has been reached.
10. Tube
11. X-Tip Mouthpiece
12. Optional rechargeable battery and charger.



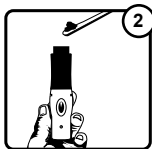
12. Charger



It's as easy as 1, 2, 3



1 Remove mouthpiece, set desired temperature and activate heat.



2 Once desired temperature is reached, then insert herbs

Tip: Always lightly fill the heating chamber with finely grinded herbs. If you put too much, you risk overheating your herbs. Air must be able to flow evenly through your herbs. Less is always more here.

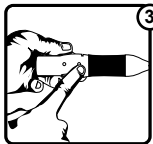


3 Put mouthpiece back on vaporizer, begin inhaling and enjoy the flavor.

★ DETAILED DIRECTIONS FOR USE ★

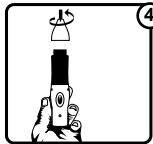
① Pre-grind you herbs, it is important to finely grind you herbs for maximum benefits - you want to grind you herbs to almost powder form.

② Preheat unit to desired temperature. Recommended Approximate temperature is 360°F/192°C to 375°F/207°C.



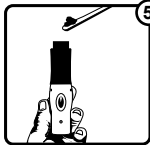
③ Set desired temperature using the Temperature +/- buttons.

It takes practice to get the perfect temperature for your specific herbs. This will require some trial and error on your part. If you are getting smoke, turn the temperature down. If you are not getting enough flavor turn the temperature up.

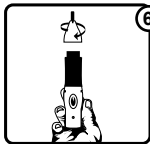


④ Remove mouthpiece and set desire temperature. Press heat button to activate heat. The red LED will indicate the unit is heating. The screen will display first the set temperature and then the actual temperature

★ **DETAILED DIRECTIONS FOR USE** ★

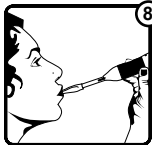


- 5** Once unit is preheated insert herbs using the included long spoon. Never touch near or inside the unit when it is hot. Make sure to only fill the unit 1/2 full or less.



- 6** Attach mouthpiece by turning it clockwise.

★ DETAILED DIRECTIONS FOR USE ★



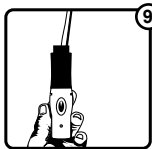
- 8** Begin inhaling and enjoy flavor.

NOTE: Included with the Oxygen Mini Vaporizer is a Matrix Tube Attachment and X-Tip Mouth-piece which can be attached and used with the Oxygen

Mini Vaporizer. The tip of the vaporizer can also be inhaled from directly. However, when using the vaporizer for extended periods of time it can become hot so we suggest using the Matrix Tube Attachment and X-Tip Mouth-piece instead.

Prior to using the Matrix Tube Attachment make sure to soak the tube in warm water to clean out.

TIP: DO NOT USE BOILING WATER.



- 9** Once you are finished, use the included spoon to remove any herbs and herbal residue. When cleaning the inside of your Oxygen be careful not to damage the internal mesh.

If the mesh comes out of the unit, clean and re-insert into unit prior to use.

★ BATTERY OPERATION ★

This unit can be used with a power adaptor (included) or with an optional rechargeable battery.

To use the battery simply attach battery to unit and use as directed.

Our standard battery pack, when fully charged, will usually last for 1 hour of continuous heating. Battery must be charged 8-12 hours each time to full charge. For first use please charge overnight for no less than 12 hours.

Caution: *Never charge battery for more than 24 hours. This will overcharge it and void the warranty.*

★ CAR ADAPTOR OPERATION ★

This unit can be used with a 12V (*Optional*) car adaptor. To use the car adaptor simply attach car adaptor to unit and use as directed. Never use this or any other aromatherapy device while driving or while operating heavy machinery. (*Optional*) car adaptor/power inverter.

★ GRINDERS ★

We strongly recommend that you finely grind your herbs prior to use in this unit. Grinding your herbs allows for air to flow evenly through them and will give you an optimal vaporization experience. Quality digital grinders can be acquired from www.vapir.com or by calling 1-800-841-1022.

REPLACEMENT PARTS & ACCESSORIES



Motorized Element Herb Grinders



Max Gourmet Herb Grinder



Maxine Gourmet Herb Grinder +
Re-Chargeable Battery



Car Charger/Power Inverter



Replacement Mouthpiece Mesh



Replacement Internal Mesh



5 Pack of Tubes and X-Tip
Mouthpieces

REPLACEMENT PARTS & ACCESSORIES

Replacement parts and accessories for this unit can be purchased from www.vapir.com or by calling 1-800-841-1022.

★NOTE ★

To stop the heating process, press the Heat button. This unit has a safety default heating time of 20 minutes. It will automatically shut off after 20 minutes of continuous use.

If unit overheats: For added safety there is a protective thermal switch inside the unit to prevent damage to the unit from overheating. When it is overheated, the thermal switch will cut off power to the heater. The unit will cease to function until it has sufficiently cooled down. The heating process can only be restarted after the unit is cooled. This will usually take 15 – 20 minutes.

90 Day Limited Warranty

Vapir, Inc.

www.vapir.com/warranty

Toll Free + 1 800 841 1022

© Vapir, Inc. ALL RIGHTS RESERVED